

# ERASMUS MUNDUS ACTION 2

## SCHOLARSHIPS TO BRAZIL

UNDERGRADUATE • DOCTORATE • POST-DOCTORATE  
ACADEMIC/ADMINISTRATIVE STAFF



# IBRASIL

INCLUSIVE & INNOVATIVE

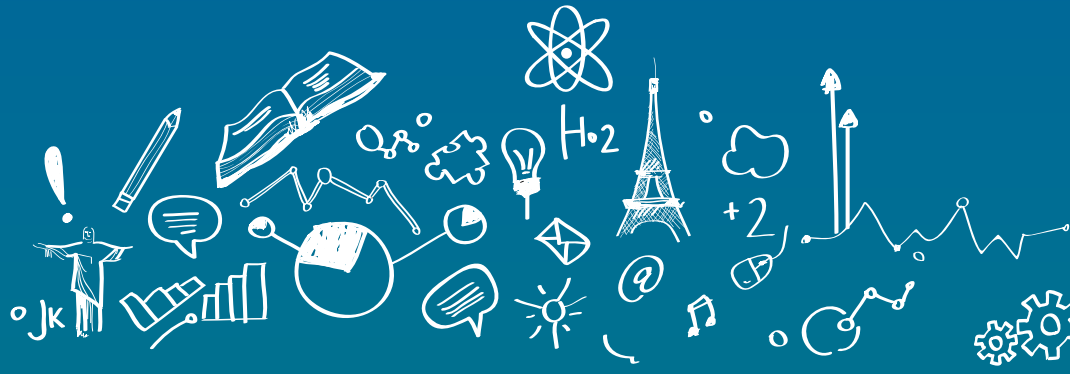
TRAINING A NEW GENERATION OF HIGHLY QUALIFIED  
TEACHERS, ENGINEERS AND RESEARCHERS  
OPEN TO INCLUSIVE VALUES



Erasmus  
Mundus

1st Cohort - November 2013 to February 2014

<http://ibrasilmundus.eu>  
[ibrasil@univ-lille3.fr](mailto:ibrasil@univ-lille3.fr)



## WHAT IS THE IBRASIL PROGRAMME?

The IBRASIL is an Erasmus Mundus Action 2 programme funded by the European Commission, and co-coordinated by the Université Lille 3 (France) and the Universidade Estadual Paulista, UNESP, (Brazil). Scholarships are granted to European students for credits mobility and degree mobility within the Brazilian Higher Education Institutions members of the IBRASIL network.

- The eligible fields of study are: Engineering & Technology and Education & Teacher Training. No scholarships are available for Masters or students from other fields of study.
- Staff (academic and administrative) can only apply for one-month scholarship.
- The European Union financial support includes travel costs, insurance and tuition fees (when applicable).

## WHAT ARE THE ELIGIBILITY REQUISITES THAT APPLY TO EUROPEAN CANDIDATES?

- Must be a national of one of the eligible European countries;
- Must have sufficient knowledge of the language of the courses or of one of the languages currently spoken in the host countries
- Undergraduate students must have successfully completed at least one year of studies at university/higher education level

## WHERE CAN I UNDERTAKE MY MOBILITY?

- Universidade Estadual Paulista « Julio de Mesquita Filho »
- Universidade Federal do Tocantins
- Universidade Federal do Vale do Sao Paulo
- Universidade Federal do Mato Grosso do Sul
- Universidade Federal de Minas Gerais
- Universidade Federal de Santa Maria
- Universidade Estadual de Feira de Santana
- Universidade Federal do Rio Grande do Norte
- Universidade Estadual do Maranhao
- Universidade do Estado de Santa Catarina
- Pontifícia Universidade Católica do Paraná

All the contact details of the partner institutions are available online: <http://ibrasilmundus.eu>

## HOW AND WHEN CAN I APPLY?

The application form is available online: <http://ibrasilmundus.eu>  
November 2013 to February 2014

### COORDINATOR:

Université Lille 3, France  
E-mail: [ibrasil@univ-lille3.fr](mailto:ibrasil@univ-lille3.fr)

### CO-COORDINATOR :

UNESP, Brazil  
Email: [erasmus@reitoria.unesp.br](mailto:erasmus@reitoria.unesp.br)